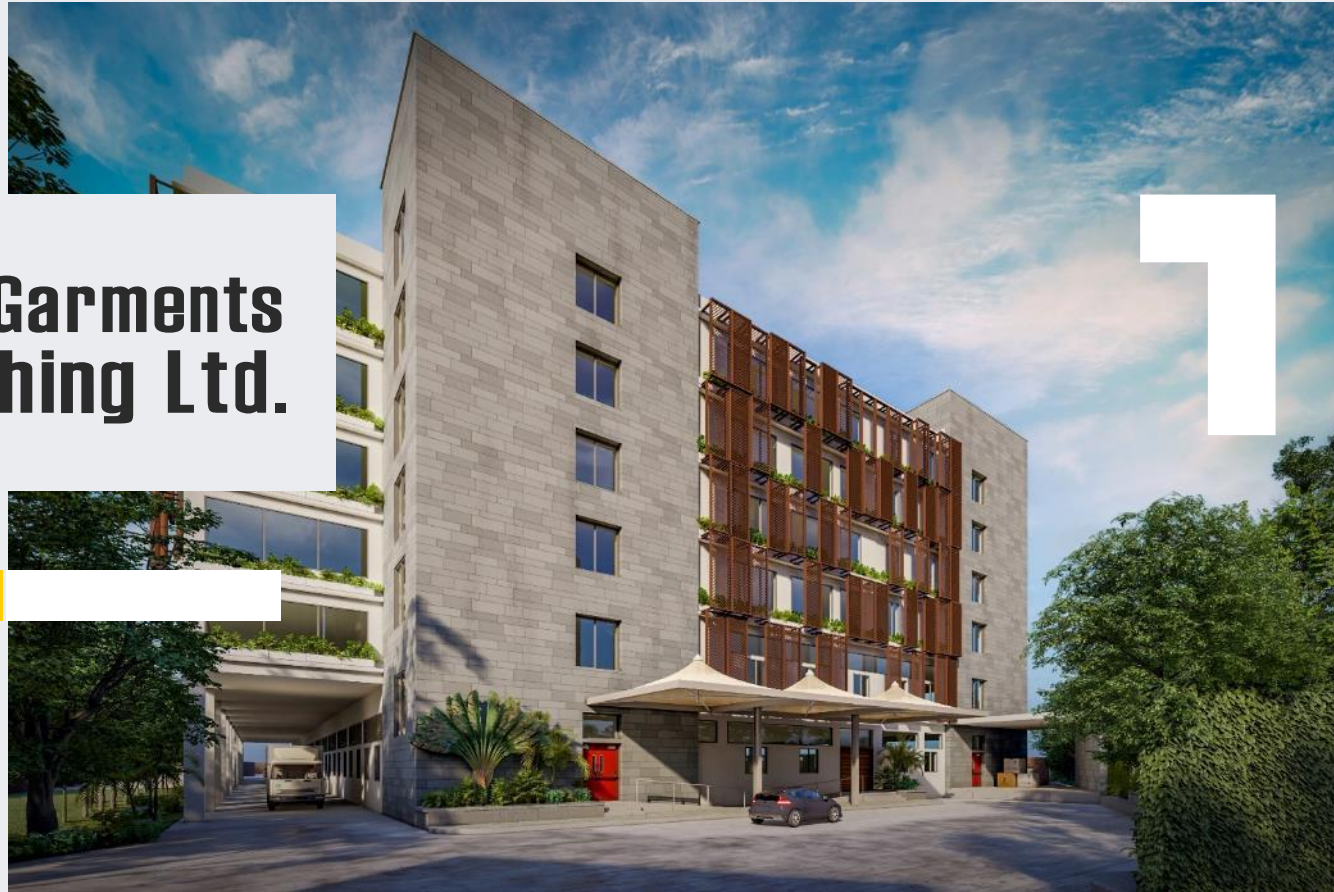




**Dhaka Garments  
& Washing Ltd.**





## SISTER CONCERNS

**1994**  
HAMS Fashion Ltd.



**2010**  
HAMS Garments Ltd.



**1998**  
HAMS Washing & Dyeing Ltd.



**2021**  
Victoria Intimate Ltd.



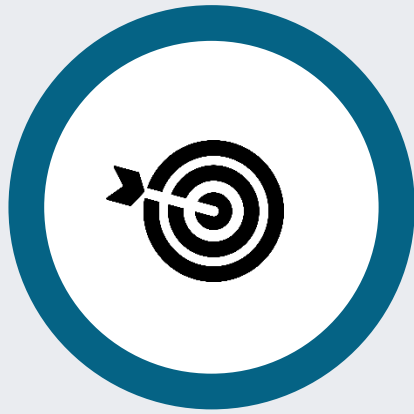
**2019**  
Dhaka Garments & Washing Ltd.  
(Upgrade of HAMS Washing & Dyeing Ltd)



# Message from Managing Director

HAMS GROUP was established in 1994 and remains as one of the leading vertical textile manufacturers in the country till to date. With indelible as commitment - employing highly skilled textile professionals, equipped with latest machinery and providing outstanding working conditions for all our employees. We always believe in creating the best products. For about past 28 years, our continuous endeavour has created excellence for our customer satisfaction.



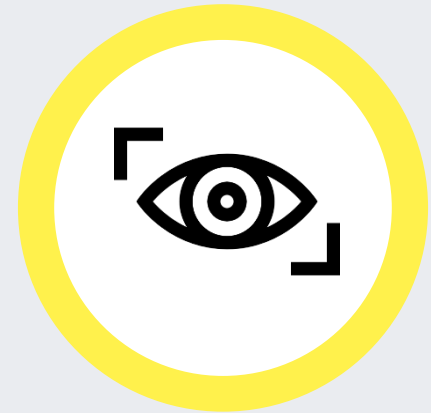


## **Mission**

We aspire to vertically integrate our line of business and become the largest denim manufacturer with the highest quality standards.

## **Vision**

Dhaka Garments & Washing Ltd aims to deploy its human capital and top-notch technology to achieve efficiency and innovation in its processes in providing world-class quality products to exceed its customer expectations. We focus on building a high-performance culture by doing it right the first time and we believe in our people's passion to drive the company to its ultimate vision and upholding our values.



# FACTORY OVERVIEW



## FACTORY SPACE

350000 Square Feet



## MANPOWER

Garments : 2200

Washing : 1100



## PRODUCTION LINE

Proposed – 64

Running – 24



## MACHINE QUANTITY

Garments : 1500 Pcs

Washing : 250 Pcs



## PRODUCTION CAPACITY

Garments : 30,000 Pcs/ Day

Washing : 1,20,000 Pcs/ Day

# OUR CUSTOMERS



**KOHL'S**

**GĒMO**



PRIMARK®



next

**NORMA®**

**TAKKO**  
FASHION

**KENNETH COLE**  
NEW YORK

 **atlasformen**  
MADE FOR ADVENTURE

Splash

**CELEBRITY★PINK®**

# CERTIFICATIONS



Grade B



No Critical Issue



Certified



9001-2015



Certified



Gold Certificate



Registered



Certified



Certified



100%



72%



Certified



Certified



Certified

# LAB FACILITY



DGWL has its own inhouse lab facility for different kinds of lab tests that is required for buyer satisfaction and product quality assurance. DGWL is keen to provide the best support by providing 100% product quality assurance.



# R&D FACILITY

DGWL has its own dedicated in-house R&D team.



DGWL is Eager to ensure buyers' needs and develop innovative product. R&D Team is Developing new designs every now and then as per buyers' taste and satisfaction to attract more buyer attention.



## Fire Protection System

- Factory building has one main and four emergency spacious exits.
- Trained Fire Fighting Team
- Adequate Fire Fighting Equipment.
- Central Fire Detection System (CFDS).
- Hydrant System.
- Evacuation plan in each floor of the building and main gate.
- Training and awareness to all employees

# HEALTH AND SAFETY



## Occupational Safety and Health

- Personal Protective Equipment.
- Emergency Preparedness and Response Risk Assessment
- General Health Worker Involvement
- Training and Awareness

# HEALTH FACILITY

## MEDICAL CENTER

DGWL has a complete 12 bedded fatigue center and dispensary supported by two Medical Officer (MBBS Doctors) and two trained Nurses.

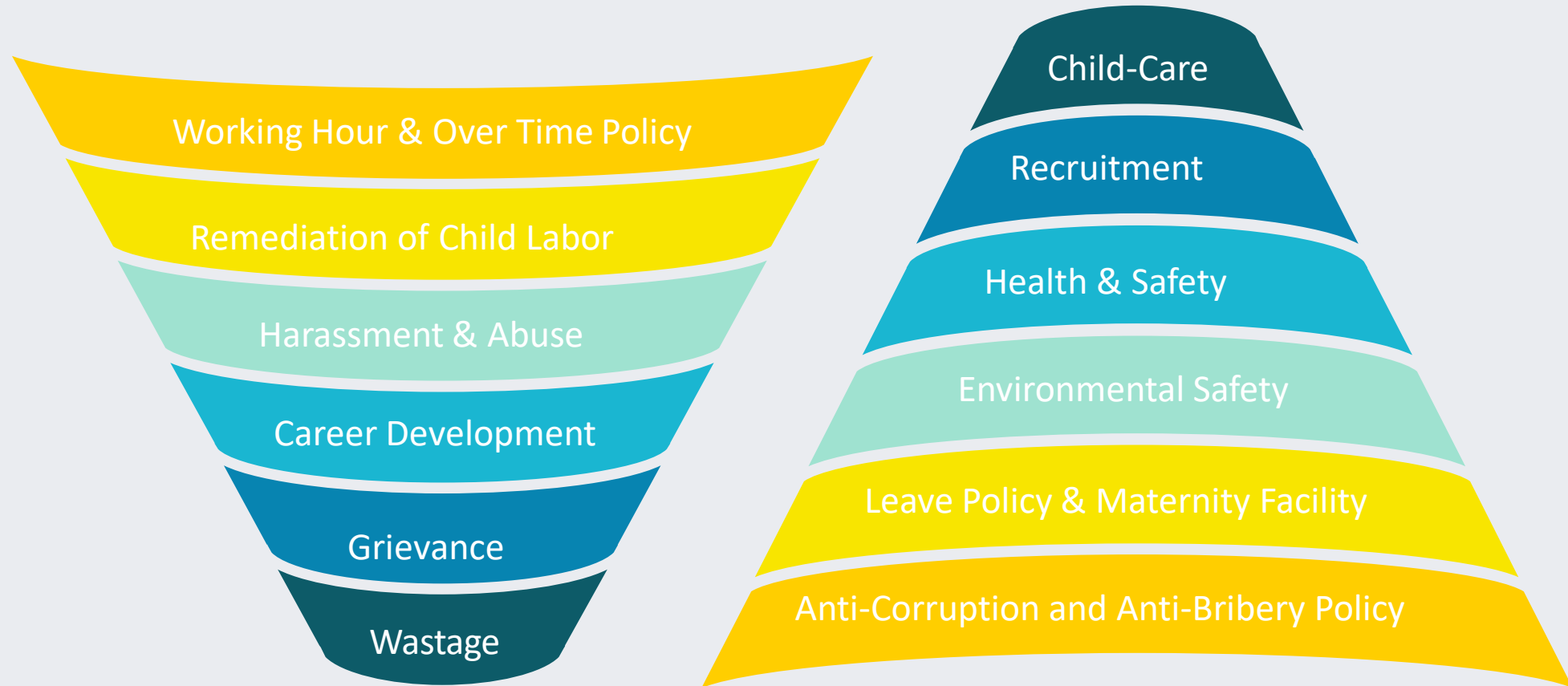
Necessary First Aid, along with supply of emergency medicines are provided at free of cost from this dispensary.



## DINING HALL

A well decorated Dining hall is present in the factory premises. We maintain a hygienic environment taking necessary measures. Two thousand workers can sit at a time to take their lunch.

# POLICY & PROCEDURE



# OUR PRODUCTS

We manufacture and supply a wide range of Garments that cater to the requirements of Men's clothing, Women's clothing and Kids Wear. Using optimum quality fabric and latest technology, our products are extremely popular amidst our valuable buyers.



- 5 pocket Denim
- 5 Pocket twill
- Chino
- Jogger
- Cargo
- Shirt
- Jacket
- Dungaree
- Shorts

# MACHINES



AUTOMATIC SNAP BUTTON



FEED OF THE ARM



AUTOMATIC LOOP ATTACH



APW MACHINE



BOTTOM HEMMING



PATTERN SEWING MACHINE



DESTROY STITCH MACHINE



SPREADING MACHINE

# MACHINES



AUTOMATIC BACK POCKET ATTACH



DOUBLE HEAD  
NEEDLE DETECTOR



AUTOMATIC LOOP  
ATTACH VIBEMAC



AUTOMATIC BACK  
POCKET ROLLING



PANT FINISHER



AUTOMATIC LOOP  
CUTTING



AUTO EDGE  
CUTTING

# PHOTO GALLERY



SEWING FLOOR



CUTTING FLOOR



FINISHING SECTION



LARGE C-TPAT AREA



CHILD CARE

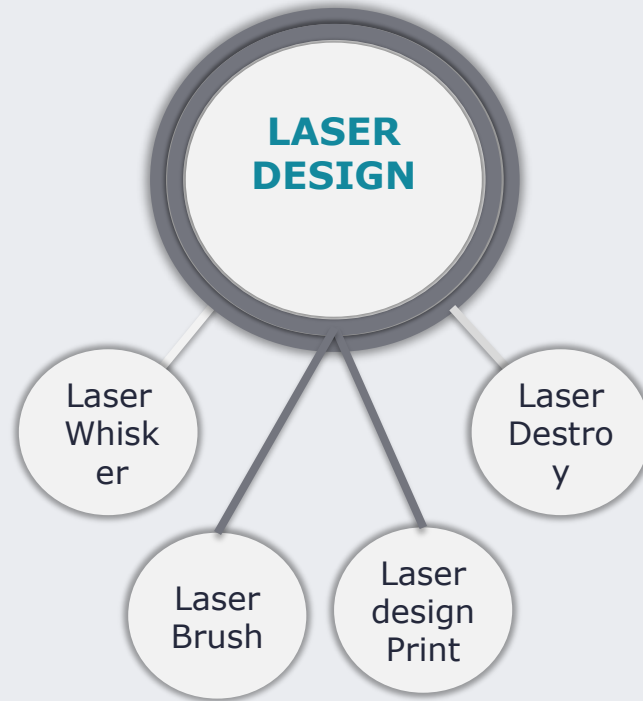


FATIGUE ROOM



# WET ROCESS

- Garment Wash
- Enzyme Wash
- Enzyme Stone Wash
- Bleach Wash
- Acid Wash
- Towel Bleach
- Reactive Dyeing
- Pigment Dyeing
- Earth/Natural Color Dyeing
- Fluorescent Dyeing
- Cool Dyeing/Mould
- Tie Dyeing
- Dischargeable Dyeing



- Whisker
- PP Spray
- Tagging
- 3D
- Grinding
- Wrinkle
- Hand Sand
- Pigment Spray
- Destroy
- Tying
- Resin Dipping Spray

# DRY ROCESS

# DRY PROCESS & WASHING

1. Laser Machines: Jeanologia & Macsa (Spain).
2. Ozone Machine: Ozon Denim (Turkey).
3. E-flow Machine: Metod (Turkey).
4. 3D Crinkle Machine from Turkey.
5. Washing Machine: Tonello (Italy), Brongo (Italy) & Yilmak (Turkey).
6. Dryer: Trevena (Italy), Yilmak (Turkey).
7. EIM (Environmental Impact Measurement) software developed by Jeanologia.
8. Dedicated Over Dye Department with separate dryers. Total Machine: Washing-50, Dryer-29 & Hydro-6 and Daily Capacity Average: 1 Lac 20k pieces.

# WASH UNIT PHOTO GALLERY



3D MACHINE



WASHING MACHINE



DRYER

# WASH UNIT PHOTO GALLERY



OZONE MACHINE



E-FLOW MACHINE



CONVEYER 3D MACHINE



LASER MACHINE



CONVEYER WOVEN



W E T P R O C E S S



PP SPRAY FACILITY

APPROVED FOR  
WASHING

H&M

ESPRIT

s.Oliver

PRIMARK®

next

JULES

KIABI

KappAhl

# ETP

## ENVIRONMENT TREATMENT PLAN





# CONTACT INFO



## Managing Director

Engr. Md. Shafiqur Rahman

E-mail: [shafiqur.rahman@hams.com.bd](mailto:shafiqur.rahman@hams.com.bd)



## Director

Md. Akib Rahman

E-mail: [akib.rahman@hams.com.bd](mailto:akib.rahman@hams.com.bd)

Mobile: +8801321137870, 01730304333



## Chief Executive Officer

Mathisha Medagama

E-mail: \_\_\_\_\_

[mathisha.medagama@hams.com.bd](mailto:mathisha.medagama@hams.com.bd) Mobile:

+8801730304422, +88001958575299

# THANK YOU

**Factory:** Dakkhin Vangahati, Sreepur, Gazipur - 1740, Bangladesh

**Corporate Office:** House # 1, Road # 6, Block # F, Niketon, Gulshan-1, Dhaka-1212, Bangladesh

+88-02-222286443, [info@hams.com.bd](mailto:info@hams.com.bd), [frontdesk.ho@hams.com.bd](mailto:frontdesk.ho@hams.com.bd), [www.hams.com.bd](http://www.hams.com.bd)